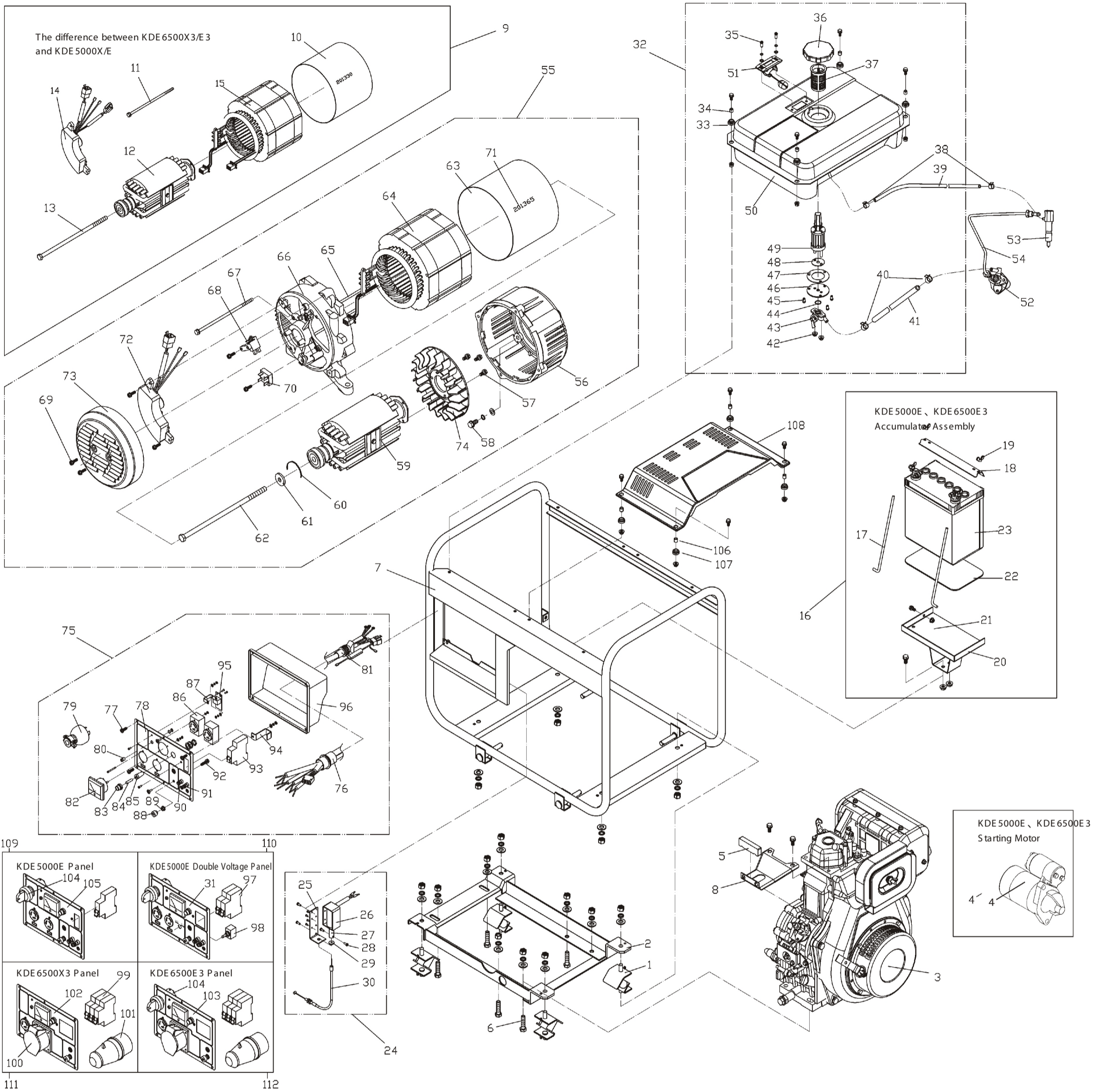


ASSEMBLY AND PARTS ALBUM

KDE 5000X/E、KDE 6500X3/E 3



| No. | Code. | Description | Qty. | No. | Code. | Description | Qty. | No. | Code. | Description | Qty. | No. | Code. | Description | Qty. |
|-----|------------------|---------------------------------------|------|-----|------------------|--|------|-----|-----------------|--|------|-----|------------------|------------------------------------|------|
| 1 | KDE 5000X-10000 | Cushion | 4 | 29 | KDE 3500X-40006a | Electromagnet Washer | 1 | 57 | GB6563-86 | Self-Tapping Locking Screw ST5 | 3 | 85 | BLX | Fuse Plastics Bottom Case | 1 |
| 2 | KDE 5000X-60000 | Housing Base Weldment Assembly | 1 | 30 | KDE 3500X-41000a | Flexible Shaft Unit | 1 | 58 | GB5781-86 | Bolt M8X20 | 4 | 86 | 250V-26A | Single-phase Receptacle | 2 |
| 3 | KM186FG-00000 | Air-cooled Diesel | 1 | 31 | KDE 5000E-13100J | Instrument Panel | 1 | 59 | SKM.6741.01 | Generator Rotor | 1 | 87 | KDE 3500X-50003a | Setting Plate | 1 |
| 4 | KM186F-15100 | Starting Motor | 1 | 32 | KDE 5000X-30000 | Fuel Tank Assembly | 1 | 60 | 6204DV | Clip Ring | 1 | 88 | GB-806-88 | Grounding Screw Cap | 1 |
| 5 | KDE 5000X-00002 | Assistant Support Frame Cushion | 1 | 33 | KDE 5000X-30004 | Cushion | 4 | 61 | 8KM.2182.01 | Pull-through Shaft Bolt Washer | 1 | 89 | GB6177-86 | Nut M6 | 1 |
| 6 | GB5783-86 | Bolt M10X40 | 6 | 34 | KDE 5000X-30005 | Sheath | 4 | 62 | 8KM.2002.01 | Pull-through Shaft Bolt M10X214 | 1 | 90 | 910A red | Anode Wiring Terminal Unit | 1 |
| 7 | KDE 5000X-50000 | Housing Weldment Assembly | 1 | 35 | GB/T819.1-2000 | Screw MSX12 | 2 | 63 | 8KM.0132.01 | Electrical Machinery Control Plate | 1 | 91 | 910A Black | Cathode Wiring Terminal Unit | 1 |
| 8 | KDE 5000X-00001 | Engine Assistant Support Frame | 1 | 36 | KM168F-10002 | Fuel Tank Cap Joint Assembly | 1 | 64 | SKM.6801.01 | Electrical Machinery S tator | 1 | 92 | JB4110-85 | Bolt M6x20 | 1 |
| 9 | KTS-5 | Three-phase Machine Assembly | 1 | 37 | KM168F-10003 | Fuel Filler Screen | 1 | 65 | 8KM.203.009 | Bolt M5 | 2 | 93 | GB10963/B20/1P | Air Switch | 1 |
| 10 | 8KM.0132.01 | Three-phase Machine Safeguard Plate | 1 | 38 | KM168F-10013 | Fuel Return Pipe Clip | 2 | 66 | 8KM.0342.01 | Electrical Machinery Rare Cover | 1 | 94 | KDE 3500X-50002a | Air Switch Setting Plate | 1 |
| 11 | GB818-85 | Screw M6X26 | 4 | 39 | KDE 5000X-30002 | Fuel Return Pipe | 1 | 67 | GB5787-86 | Bolt M6X120 | 4 | 95 | KDE 3500X-50008a | Oil Pressure Protection Breadboard | 1 |
| 12 | SKM.6741.01 | Three-phase Generator Rotor | 1 | 40 | KM168F-30011 | Fuel Filler Pipe Clip | 2 | 68 | D104 | Carbon Brush | 1 | 96 | KDE 5000X-70002 | Instrument Box Rare Cover | 1 |
| 13 | 8KM.2004.01 | Pull-through Shaft Bolt M10X224 | 1 | 41 | KDE 5000X-30001 | Fuel Filler Pipe | 1 | 69 | GB6563-86 | Self-tapping Locking Screw | 2 | 97 | DZ47-63 C20 | Air Switch | 1 |
| 14 | SKM.5242.005 | Three-phase Excitation AVR | 1 | 42 | GB6177-86 | Nut M6 | 2 | 70 | RBP35-10 | Gratz Rectifier | 1 | 98 | KN11-302 | Knob Switch | 1 |
| 15 | SKM.6801.01 | Three-phase Machine S tator | 1 | 43 | KM168F-10400 | Fuel Tank Switch Assembly | 1 | 71 | | Generator Serial Number | 1 | 99 | DZ47-63 C10 | Air Switch | 1 |
| 16 | KDE 5000E-80000 | Accumulator Assembly | 1 | 44 | GB3452.1-92 | O-Ring | 1 | 72 | AVR | Excitation AVR | 1 | 100 | 16A-6h/220-415V | Three-phase Receptacle | 1 |
| 17 | KDE 3500E-00003a | Screw Rod | 2 | 45 | GB/T819.1-2000 | Screw | 3 | 73 | 8KM.0131.01 | Electrical Machinery Booting Air Cover | 1 | 101 | 16A-6h/220-415V | Three-phase Pin | 1 |
| 18 | KDE 3500E-00005a | Accumulator Pressure Plate | 1 | 46 | KDE 5000X-31006 | Seal Plate | 1 | 74 | 8KM.4351.01 | Electrical Machinery Fan | 1 | 102 | KDE 6500X3-71000 | Instrument Panel | 1 |
| 19 | GB62-88 | Wing Nut M6 | 2 | 47 | KDE 5000X-31007 | Seal Washer | 1 | 75 | KDE 5000X-70000 | Panel Assembly | 1 | 103 | KDE 6500E3-71000 | Instrument Panel | 1 |
| 20 | KDE 5000E-81000 | Accumulator Bracket Weldment Assembly | 1 | 48 | KM168F-10007 | Seal Washer | 1 | 76 | KDE 5000X-70003 | Wiring Harness Setting Sheath | 1 | 104 | JK425 | Starting key | 1 |
| 21 | GB6177-86 | Nut M6 | 1 | 49 | KM168F-10300 | Element Assembly | 1 | 77 | GB818-85 | Screw M6X16 | 4 | 105 | KDE 5000E-71000 | Instrument Panel | 1 |
| 22 | KDE 3500E-00002a | Accumulator Washer | 1 | 50 | KDE 5000X-31000 | Fuel Tank Weldment Assembly | 1 | 78 | KDE 5000X-70001 | Instrument Panel | 1 | 106 | KDE 5000X-30005 | Sheath | 4 |
| 23 | 36AH | Accumulator 12V | 1 | 51 | KDE 5000X-32000 | Oil Mark Assembly | 1 | 79 | 250V/26A | Single-phase Pin | 1 | 107 | KDE 5000X-30004 | Cushion | 4 |
| 24 | KDE 3500X-40000a | Electromagnet Assembly | 1 | 52 | KM186F-12000 | Fuel Pump | 1 | 80 | CLAD | Oil Pressure Alerting Lamp | 1 | 108 | KDE 5000X-40000 | Decorating board Assembly | 1 |
| 25 | KDE 3500X-44000a | Electromagnet Setting Plate | 1 | 53 | KM186F-13000 | Nozzle | 1 | 81 | KDE 5000X-70009 | Circuitry Setting Sheath | 1 | 109 | KDE 5000E-70000 | Panel Assembly | 1 |
| 26 | DCT-12-C | Electromagnet | 1 | 54 | KM186F-10500 | High-Pressure Fuel Pipe | 1 | 82 | MV52.5000-300V | Voltmeter KD-45 | 1 | 110 | KDE 5000E-13000J | Panel Assembly | 1 |
| 27 | DCT-12-C | Iron-corn | 1 | 55 | KT-5 | Single-phase Electrical Machinery Assembly | 1 | 83 | BLX | Fuse Box | 1 | 111 | KDE 6500X3-70000 | Panel Assembly | 1 |
| 28 | GB/T818-85 | Screw MSX8 | 2 | 56 | 8KM.3041.01 | Electrical Machinery Forepart Cover | 1 | 84 | Φ6×30 | Fuse | 1 | 112 | KDE 6500E3-70000 | Panel Assembly | 1 |