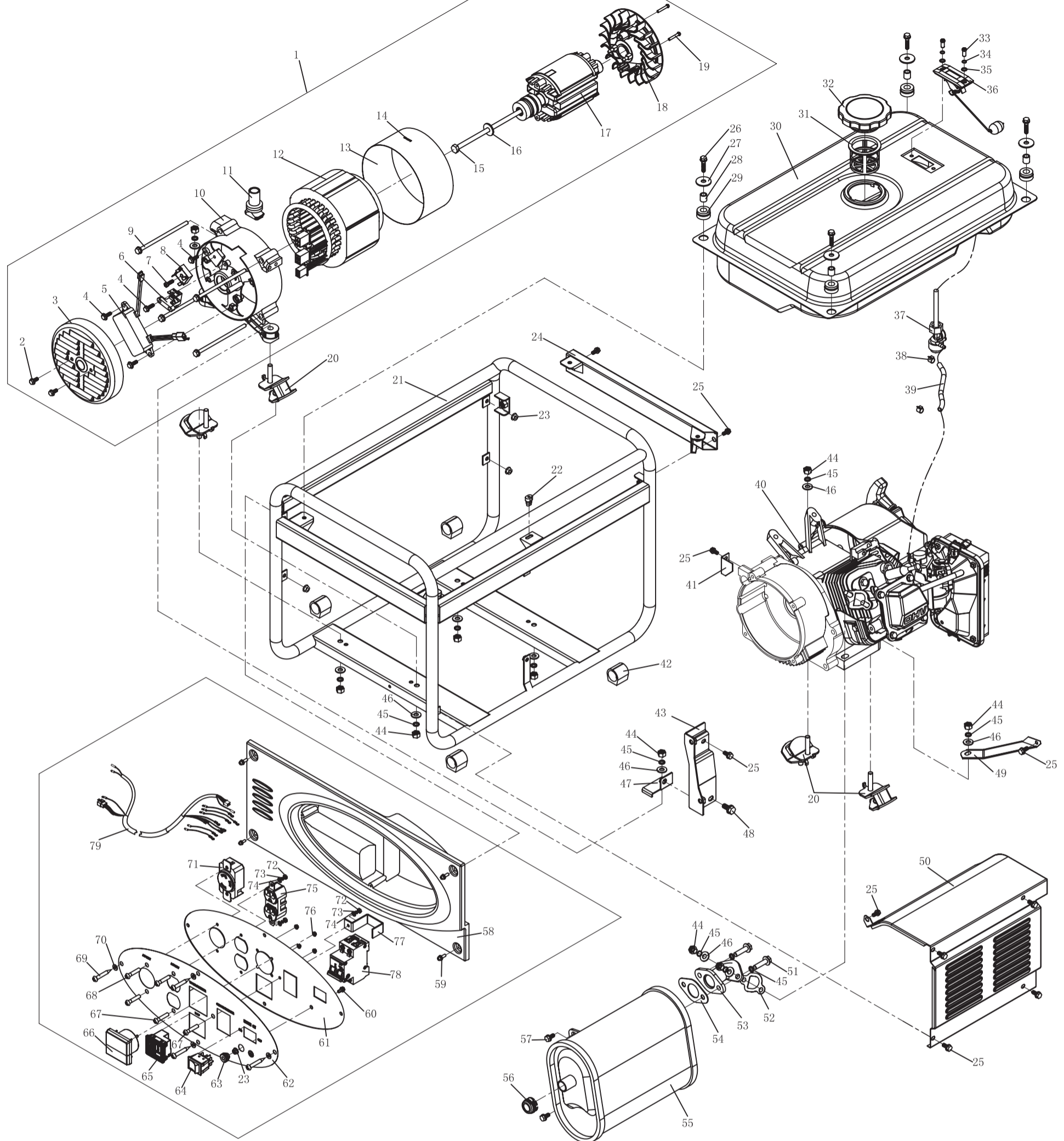


ASSEMBLY AND PART DRAWING KGE2400X



No.	Part No.	Description	Qty.	No.	Part No.	Description	Qty.	No.	Part No.	Description	Qty.
1	KT-2. 2	Motor Assembly	1	30	KGE2500X-11100	Oil Tank Weldment	1	59	GB/T9074. 4-1988	Screw Subassembly M6X20	4
2	GB/T16674. 1-2004	Screw M5X12	2	31	KGE5500E-11005	Oil Filling Strainer	1	60	GB/T5789-2000	Bolt M6X20	1
3	8KM. 012. 009	Rear Cover	1	32	KGE5500E-11200	Fuel Tank Cover Subassembly	1	61	KGE2500X-13110FA	A-Style Control Panel	1
4	GB/T16674. 1-2004	Bolt M5X20	4	33	GB/T818-2000	Screw M5X12	2	62	KGE2500X-13121FA	A-Style PVC Label	1
5	AVR2-1F1E	AVR	1	34	GB/T93-1987	Spring Washer 5	2	63	KDE5000E-09005	Grounding Nut	1
6	D104	Magnetic Carbon Brush	1	35	GB/T97. 1-2002	Washer 5	2	64	RF-1004	Boat-shaped Switch	1
7	GB/T5783-2000	Screw M5X16	1	36	KGE2500X-11300	Oil Scale Assembly	1	65	DC12V 8. 3A	DC Receptacle	1
8	KBPC35-10	Rectifier	1	37	KGE5500E-11400	Oil Switch Subassembly	1	66	MU-45 0-150V	Voltimeter	1
9	8KM. 203. 009	Stator Tighten Bolt	4	38	KM186F-10013	Oil Pipe Lathedog	2	67	GB/T818-2000	Screw M4X16	3
10	8KM. 032. 009	Rear End Cover	1	39	KGE2500X-11004	Oil Pipe	1	68	GB/T818-2000	Screw M4X10	2
11	KDE5000E-09002	Circuit Fixed Cover	1	40	KM200G (1) X	Gasoline Engine	1	69	GB/T845-1985	Self-tapping Screw M5X16	4
12	3KM. 681. 009	Stator Assembly	1	41	KGE2500X-02001	Motor Technical Baffle Plate	1	70	GB/T97. 1-2002	Washer(black) 5	4
13	8KM. 011. 009	Motor Protection Plate	1	42	KGE2500X-03001	Shock Absorption Cover of Engine Frame	4	71	L5-30	A-Style Receptacle	1
14		Generator Set Code	1	43	KGE2500X-10500	Muffler Fixed Bracket Weldment	1	72	GB/T6170-2000	Nut M4	3
15	8KM. 202. 009	Piercing Bolt	1	44	GB/T6170-2000	Nut M8	10	73	GB/T97. 1-2002	Washer 4	3
16	8KM. 214. 009	Piercing Bolt Gasket	1	45	GB/T93-1987	Spring Washer 8	12	74	GB/T93-1987	Spring Washer 4	3
17	5KM. 617. 009	Rotor Assembly	1	46	GB/T97. 1-2002	Washer 8	10	75	RU-22	A-Style Receptacle	1
18	8KM. 451. 009	Fan	1	47	KGE2500X-10600	Muffler Fixed Bracket Weldment	1	76	GB/T6172-2000	Nut M3	4
19	GB/T823-2000	Screw M4X25	2	48	GB/T5789-2000	Bolt M8X12	1	77	KDE14T-13103G	Breaker Bracket	1
20	KGE2500X-12000	Shock Pad Assembly	4	49	KG200GX-07006	Connection Fixed Plate of Air Filter	1	78	NB1-63-B20-2P	Breaker	1
21	KGE2500X-03100	Engine Frame Weldment	1	50	KGE2500X-10400	Muffler Protection Plate	1	79	KGE2400X-13200	Wire Harness Assembly	1
22	KGE2500X-11005	Shock Absorption Block of Fuel Tank	1	51	GB/T5786-2000	Bolt M8X1X30	2	80			
23	GB/T6177. 1-2000	Nut M6	5	52	KG160-02014	Exhaust Pipe Gasket	1	81			
24	KGE2500X-03200	Engine Frame Bracket	1	53	KGE2500X-10200	Exhaust Pipe Curved Part Weldment	1	82			
25	GB/T5789-2000	Bolt M8X12	10	54	KGE5500E-10001	Curved Pipe Seal Gasket	1	83			
26	GB/T5789-2000	Bolt M6X25	4	55	KGE2500X-10100	Muffler Weldment	1	84			
27	GB/T96. 1-2002	Big Washer 8	4	56	KGE5500E-10300	Fireproof Cap Subassembly	1	85			
28	KGE5500E-11001	Height Bushing	4	57	GB/T5789-2000	Bolt M8X20	2	86			
29	KGE5500E-11002	Shock Pad	4	58	KGE2500X-09001	Instrument Rear Cover	1	87			