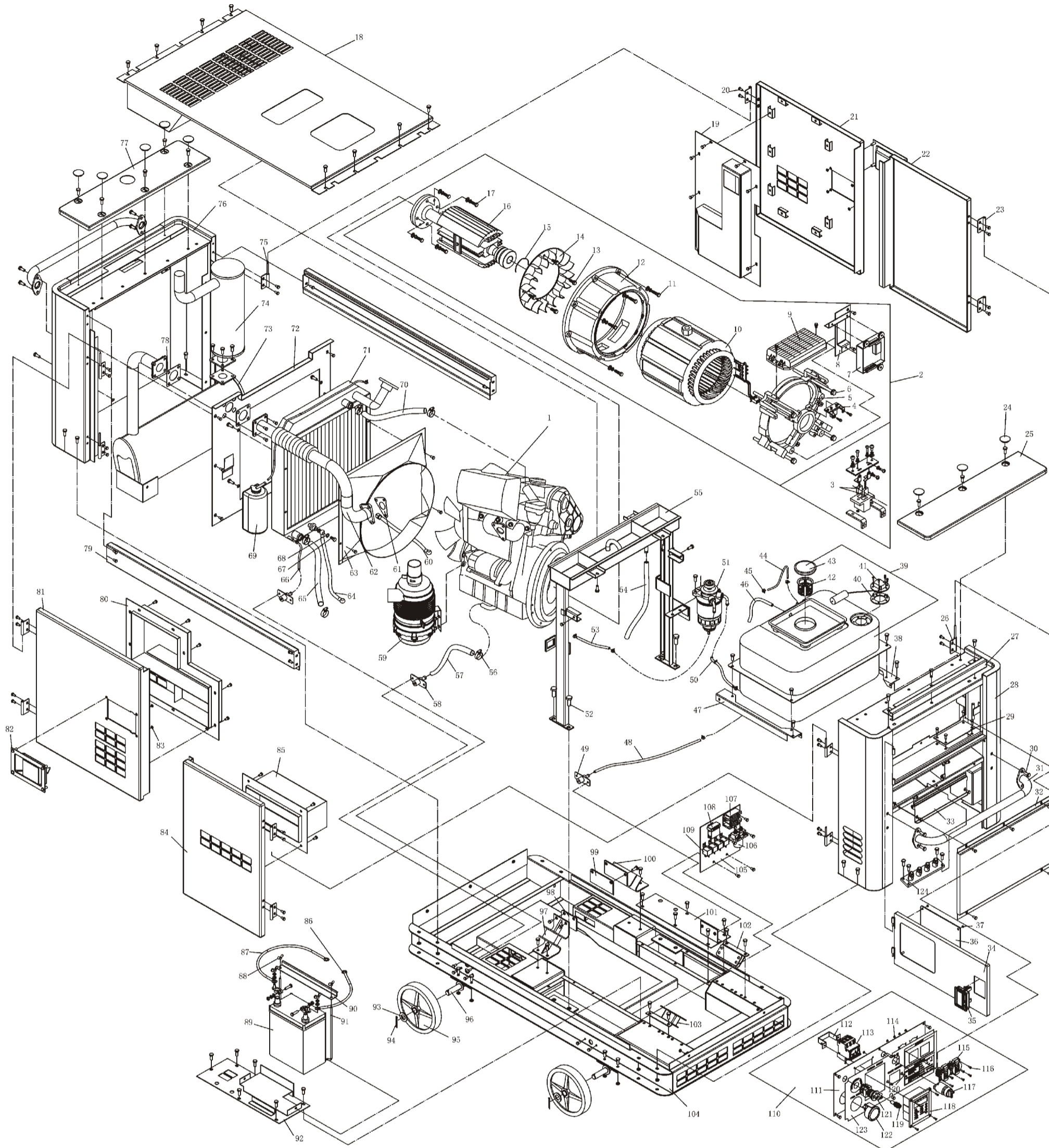


ASSEMBLY AND PARTS ALBUM

KDE 16STA3



No.	Part.No	Description	Qty.	No.	Part.No	Description	Qty.	No.	Part.No	Description	Qty.	No.	Part.No	Description	Qty.
1	KM376AG-1000000	Engine assembly	1	33	KDE 195T-04002	Junction box cover board	1	65	KDE 19T3-10003	Outlet water pipe of water tank	1	97	KDE 19T3-12200	Right damping cushion of engine	1
2	KDE 19T3-02000	Motor assembly	1	34	KDE 195T-04300	Meter door welding	1	66	KD19T3-10004	Drain water pipe of water tank	2	98	KDE 19T3-12001	Suspension right backing board of diesel engine	1
3	KT245-03001	Carbon brush	2	35	KDE 12E-08350	Door lock	1	67	KM376G-1013102	Bolt	1	99	KDE 19T3-12002	Suspension left backing board of diesel engine	1
4	KT245-03100	Carbon brush subassembly	1	36	KDE 195T-04005	Organic glass	1	68	JB982-1977	Gasket	7	100	KDE 19T3-12300	Left damping cushion of engine	1
5	KT245-00002	Back-end cover	1	37	GB/T6170-2000	Nut M6	4	69	KDE 19T3-10001	Antifreeze pot	1	101	KDE 195T-03020	Electric fixing board welding	1
6	GB/T5783-2000	Bolt M10×220	4	38	KDE 19T3-14016	Left supporting board of oil tank	1	70	KDE 19T3-10002	Inlet water pipe of water tank	1	102	KDE 195T-12100	Damping cushion (1) of generator	1
7	PLY-MB3-C	Smart control module	1	39	KDE 19T3-14000	Oil tank assembly	1	71	KDE 19T3-10200	Radiator Assembly	1	103	KDE 195T-12200	Damping cushion (2) of generator	1
8	KDE 195T-02100	Module fixed bracket	1	40	KDE 19T3-14018	Rubber gasket	1	72	KDE 195T-10200	Clapboard welding	1	104	KDE 195T-03100	Chassis welding piece	1
9	AVR-15-3	Automatic voltage regulator	1	41	KDE 19T3-14017	Oil mass sensor	1	73	KDE 195T-11100	Muffler assembly	1	105	KDE 16T3-13601	Relay bottom board	1
10	KT270-020001	Stator assembly	1	42	KM168F-10004	Oiling filter screen	1	74	KDE 195T-11200	Muffler welding piece	1	106	QDC-100	Preheat relay	1
11	GB/T5782-2000	Bolt M8×35	8	43	KDE 19T3-14200	Oil Tank cover	1	75	KDE 195T-07020	Hinge (2)	4	107	CDQ-36	Charging adjuster	1
12	KT270-00001	Back-front cover	1	44	KDE 19T3-14002	Return oil pipe of tank	1	76	KDE 195T-06100	Back boarding welding	1	108	BX2041	Four line fuse box	1
13	GB/T5788-2000	Bolt M8×35	4	45	QC/T619-1999	Clip 8	11	77	KDE 195T-06200	Cover board welding of back boarding	1	109	HFV4 12V 20A	Small type relay	4
14	KT270-00003	Fan	1	46	KDE 19T3-14006	Drain oil pipe of oil pan	1	78	KDE 19T3-11001	Gasket of exhaust pipe (asbestos)	2	110	KDE 195TA3-13100E	Instrument assembly	1
15	GB/T894-1986	Bearing retaining ring	1	47	KDE 19T3-14015	Right supporting board of tank	1	79	KDE 195T-08001	Decorative board of top cover	2	111	KDE 195TA3-13110E	Control panel	1
16	KT270-01000	Rotor assembly	1	48	KDE 19T3-14011	Drain oil pipe of tank	1	80	KDE 195T-07300	Air line welding piece of door board (1)	1	112	KDE 16T3-13103	Breaker bracket	1
17	GB/T5782-2000	Bolt M10×25	4	49	KDE 605T-03020	Drain fuel pipe welding	2	81	KDE 195T-07400	Door board (1) assembly	1	113	DZ47-63/3P C20	Breaker	1
18	KDE 195T-08100	Coping welding	1	50	KDE 19T3-14009	Outlet oil pipe of tank	1	82	KDE 355T-07100-M	Door lock assembly	2	114	GB/T6170-2000	Nut M4	14
19	KDE 195T-07100	Air line welding piece of door board (2)	1	51	DX200M	Oil and water separator assembly	1	83	GB/T6170-2000	Nut M8	26	115	16A 250V	E-type receptacle	2
20	GB/T5788-2000	Bolt M6×12	107	52	GB/T5788-2000	Bolt M2×20	4	84	KDE 195T-07700	Door board (4) assembly	1	116	GB/T819.1-2000	Screw M4×14	18
21	KDE 195T-07500	Door board (2) assembly	1	53	KDE 19T3-14013	Delivery oil pipe of oil tank	1	85	KDE 195T-07200	Air road welding piece of door board (4)	1	117	JK427	Ignition switch	1
22	KDE 195T-07600	Door board (3) assembly	1	54	KDE 19T3-05002	Drain water pipe	1	86	KDE 195T-13210(B)	Cathode wiring of battery	1	118	PLY-MB3-D	Smart display screen	1
23	KDE 195T-07012	Fixing plate	8	55	KDE 195T-05000	Center pillar assembly	1	87	KDE 195T-13210(R)	Anode wiring of battery	1	119	BX210C	Fuse seat	1
24	KDE 355T-04001	Waterproof cover	8	56	QC/T619-1999	Clip 25	12	88	GB/T62-1988	Butterfly shaped nut M6	2	120	GB/T818-2000	Screw M4×12	2
25	KDE 195T-04200	Front column cover board welding	1	57	KDE 19T3-01004	Oil Draining Pipe	1	89	65AH-12V	Battery	1	121	HW411ER	Urgent stop button	1
26	KDE 195T-07010	Hinge (1)	4	58	KDE 605T-03010	Drain-oil Pipe Welding	1	90	KDE 19T3-03002	Pressed board of battery	1	122	8111-12V	Oil meter	1
27	KDE 195T-04010	Decorative plate welding	1	59	KM376AG-1109000	Air Cleaner Assembly	1	91	KDE 19T3-03003	Pressed board bolt	2	123	KDE 195TA3-13120E	PVC Label	1
28	KDE 195T-04100	Front column welding	1	60	KM376-100	Oil tube	1	92	KDE 195T-03010	Battery supporting welding	1	124	KDE 16T3-13500	Output board	1
29	KDE 195T-04004	Cover board	1	61	KDE 14T-11002	Exhaust air pipe Gasket	1	93	GB/T97.1-2002	lat washer	4				
30	GB/T5788-2000	Bolt M8×16	76	62	KDE 14T-11200	Flexible exhaust air pipe assembly	1	94	GB/T91-2000	Cotter pin 3	4				
31	KDE 195T-04020	Handle welding	2	63	KDE 16T3-10200	Radiator Assembly	1	95	KDE 19T3-03310	Cartwheel	4				
32	KDE 195T-04001	Front cover board	1	64	KM376-200	Oil tube	1	96	KDE 195T-03200	Wheel and axle welding piece	2				

WUXI KIPOR POWER CO., LTD.

Besides Jingyi Rd, Third-stage Development Section of Wangzhong Industry Area,
Wuxi High & New Technology Industry Development Zone Tel:0086-510-85205041 Fax:0086-510-85203796